



**Sedgley's**

**Diamond 60**

*Sixty years, sixty people,  
sixty stories about village life  
since 1952.*

1977

## Jubilee Scout Hall

**by George Cox**

1<sup>st</sup> Sedgley Scouts started in 1910, but it took 67 years before we had our own headquarters. The site we chose was in Ladies Walk, at the far end of what is now Coop car park. We obtained the lease from Dudley Corporation in 1970 and opened Jubilee Hall on 5<sup>th</sup> November 1977.

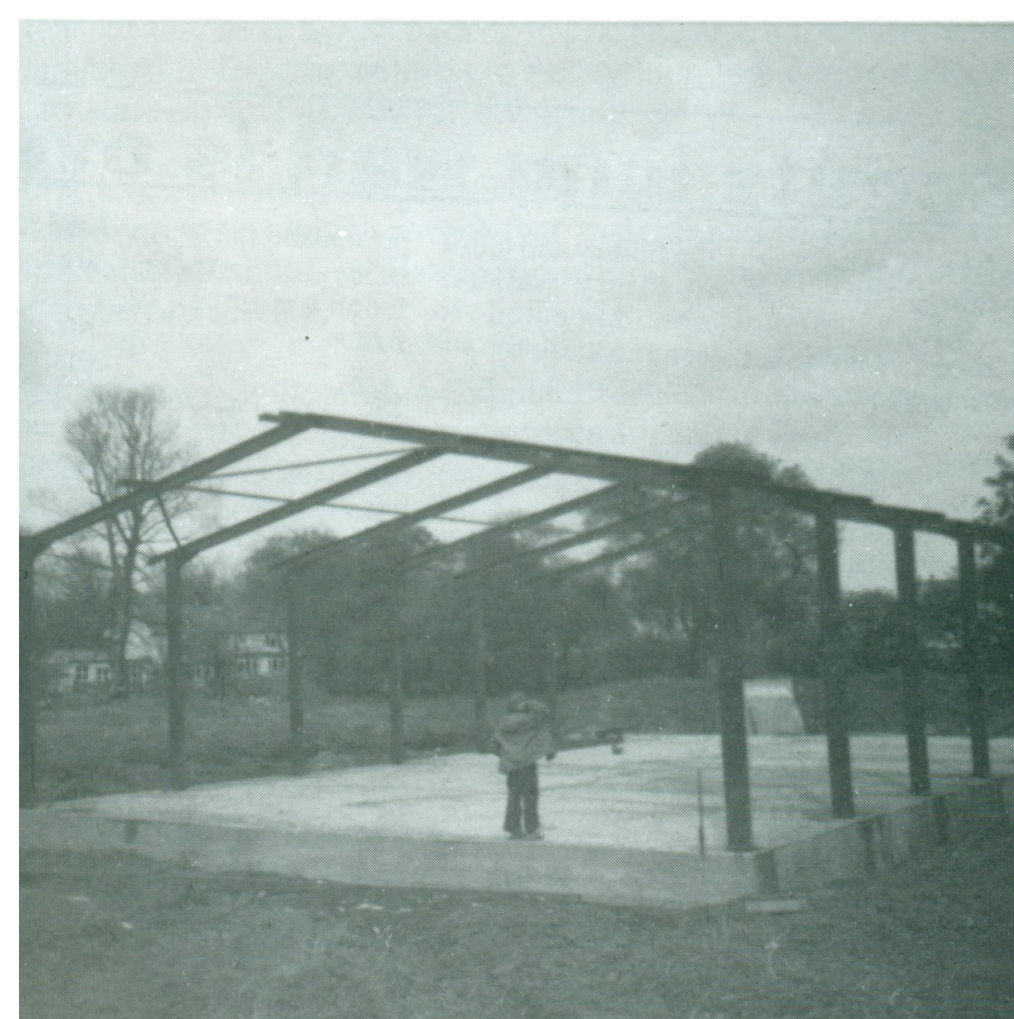
Contractors began it, but we found they were only coming at weekends, using us as a sort of 'fall-back' when their other work was slack, so we saw them off. By that time the main building was up and the roof was on but none of the inside had been started, so we did that ourselves.

Four of us worked on it for 3-4 years. The man who ran it for us was Frank Turner, a building lecturer at Wolverhampton College, his brother Lawson Turner who taught carpentry and joinery at Bilston College and Wilf Beech, an electrician. Frank got his class at Wolverhampton College to design the building and he oversaw and approved it. We were called the 'Sunday Morning Club', as that was when we did most of the work. Frank, Lawson and Wilf had all been scouts in their youth and they wanted to do their bit for scouting in Sedgley.

That day was the culmination of seven years' hard work when we were building it and laying it all out. Eventually the great day came. West Mercia County Commissioner Eddie Gribble officially opened the building and a lot of people attended who were connected with 1<sup>st</sup> Sedgley. Since then we've seen two additions to the building.



**Contractors lay the foundations**



**They also erected the steel frame**



**The 'Sunday Morning Club' work on the building**



**Frank Turner, Wilf Beech and  
Lawson Turner**