

The inspirational stained glass windows of Tom Denny at Great Malvern Priory.



The Friends of Malvern Priory, through the bequest of Martin Radford, donated the Tom Denny windows, which celebrate the millennium. They can be found in the north choir. Their theme is Psalm 36. Denny has used the **Malvern Hills** as part of his inspiration - as well as colours which echo the medieval windows.

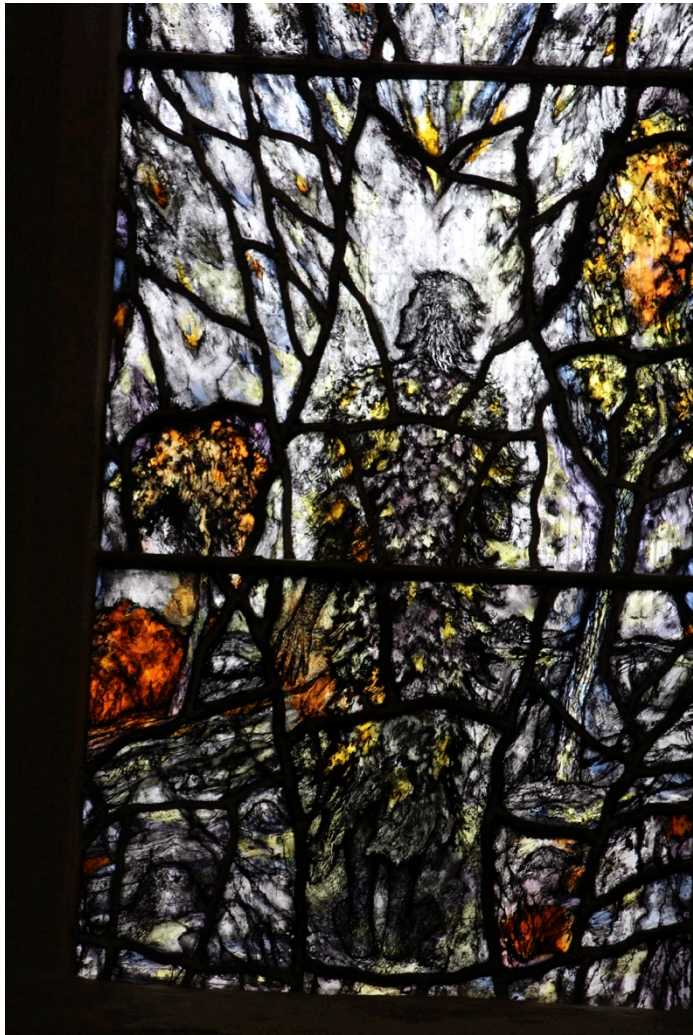
Verses 5-10 of Psalm 36 explore facets of the very nature of God.



'You save humans and animals alike'



'They feast on the abundance of your house.'



'In your Light we see the light.'



The landscapes are intended to evoke the landscape of the Malvern Hills.



A figure moves out of view suggesting a passage from Isaiah: 'how beautiful upon the mountains are the feet of the messenger who announces peace (Isaiah 52:7)

Psalm 36 verses 5-10:

**Your steadfast love, O Lord,
extends to the heavens,
Your faithfulness to the clouds.
Your righteousness is like
The mighty mountains,
Your judgements are like the great deep;
You save humans and animals alike, O Lord.
How precious is your steadfast love, O God!
All people may take refuge
In the shadow of Your wings.
They feast on the abundance
of Your house
And You give them drink from the river
of Your delights.
For with You is the fountain of life;
In Your light we see the light.
O continue Your steadfast love to those
who know You,
And Your salvation to the upright of heart!**



In the Westerly Window a great wing-like form hovers over the four lights – figures may be seen ‘in the shadow of Your wings’.



A bird moves up from above the landscape to the sky. 'Your steadfast love, O Lord, extends to the heavens.'

Martin and Magda Jones

March 2018.

Text source:

Information from Great Malvern Priory leaflet: 'Millennium Windows'.